

Infiniti Automotive Egg Display Cirque Du Soleil



Infiniti Automotive Cirque Du Soleil Egg Display
Completion 2012

Summary

Production of a glowing fibreglass egg housing the new breed of Infiniti vehicles coming to Australia. Infiniti is Cirque Du Soleil's major sponsor with the egg concept tying in with the show 'Ovo' touring Australia throughout 2012 - 2013. This egg has an Infiniti FX series vehicle inside for visitors to peek inside and view the new vehicle being released. This egg was designed to be pulled down, transported and setup in multiple locations around Australia.



Melbourne Aquarium Shipwreck Display



Melbourne Aquarium Sharks of Shipwreck Bay summer campaign marketing stunt
Completion 2011 - 2012

Summary

Production of a large floating shipwreck display placed in Melbourne's Yarra River. This display was used to promote Melbourne Aquarium's summer campaign. This ship spanned 17 meters in length and was placed directly in front of Crown Casino's Southbank promenade. This installation was visible both during the day and at night time with an LED solar lighting system installed.



Casey Council Public Art Display



City of Casey Council Casey Fields Athletics Complex Public Art
Completion 2011

Summary

Production of a field of oversized javelins speared into the ground surrounding an oversized shot put labelled 'Fields Landing'. This is the entrance to the newly added Athletics complex in Casey Fields, Cranbourne.



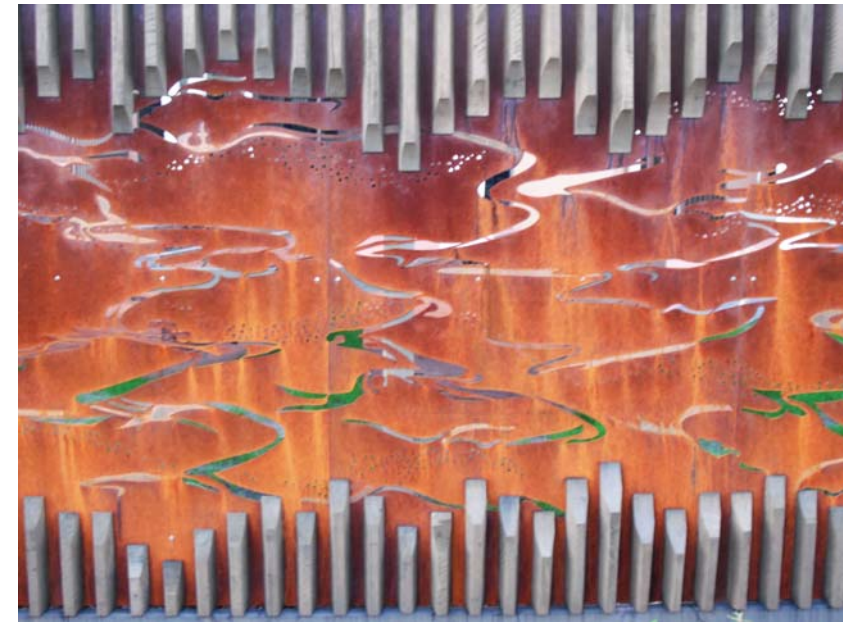
Melbourne Aquarium Shipwreck Display



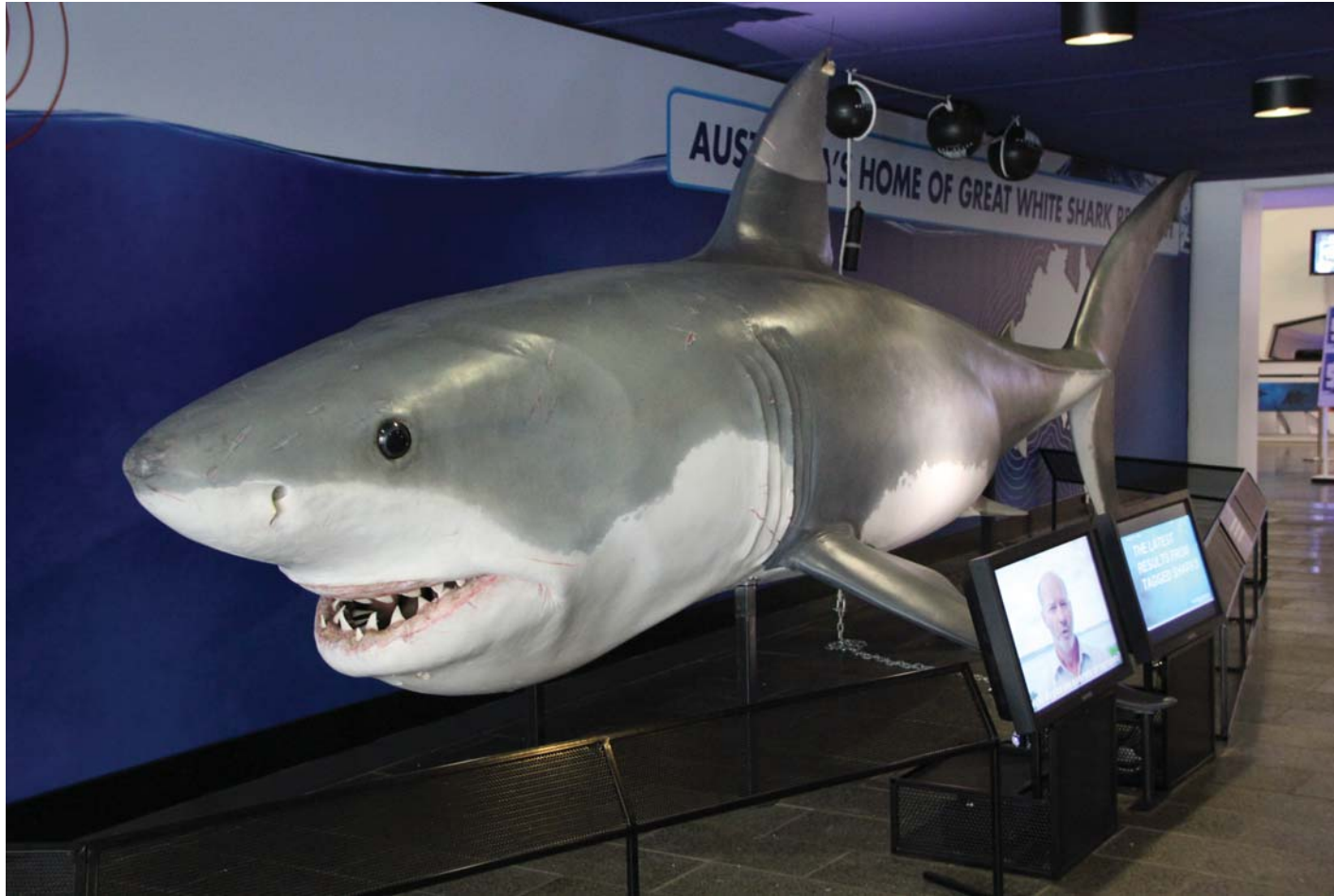
Latrobe Community Centre Morewell Public Fence Art
Completion 2011 - 2012

Summary

Production of a themed fence to represent the flow of water through nature. Individually cut hardwood timber surrounds a water flow inspired corten steel surface cladding.



Melbourne Aquarium Public Entrance Display



Melbourne Aquarium Public Entrance Display
Completion 2012

Summary

Casting of a large Great White shark was purchased and placed into position in the entrance to the Melbourne Aquarium. This shark was then scenic painted onsite, barriers were also manufactured with customised TV stands and interactive light and sound activation buttons. This interactive display educates visitors about the current shark tracking program along the South East coast of Australia with live feeds shown on screen.